



10 71 Alderbrook Road  
SW12 8AD

### Robert Silver

Robert's handmade, Post-Deco, tableware is intended to be used and to bring a little style to the daily business of eating and drinking.

@robertsilverpottery  
07788 447 627

4-5 Oct 11-12 Oct



11 61 Badminton Road  
SW12 8BL

### Kate Clark

Kate creates wheel thrown and handbuilt stoneware pottery that is hand carved. Small batches and one-off pieces that bring joy.

www.kceramicsstudio.com  
@k\_ceramics  
07751 202 367

4-5 Oct 11-12 Oct



12 26 Holmside Road  
SW12 8RJ

### Madeleine d'Oultremont

Madeleine is a painter and illustrator. She is fascinated by colour and geographical maps that she incorporates into her abstract painting.

www.madeleinedoultremont.com  
@Madeleinedoultremont  
07541 035 265

4-5 Oct 11-12 Oct

## KEY

4-6 Oct 11-12 Oct Dates open



Wheelchair accessible



Stairs – please call the artists for further information.  
Most venues will have front doorsteps as they are home studios.

Visit [www.artistsopenhouse.co.uk](http://www.artistsopenhouse.co.uk)

for interactive maps of Putney, Southfields, Battersea, Wandsworth, Balham, Tooting and Furzedown, and Delta House and Wimbledon Art Studios. Also further information on the artists.



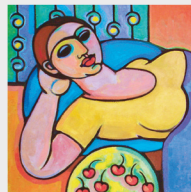
13 57 Tantallon Road  
SW12 8DF

### Denise Connell

Inspired by the Sea of Cortez, Denise creates patterns shaped by the elemental forces and natural rhythms of this powerful coastal landscape.

denisecamilleconnell@gmail.com  
07968 424 871

4-5 Oct 11-12 Oct



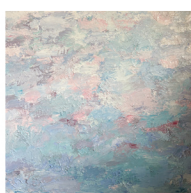
14 78A Broomwood Road  
SW11 6LA

### Linda Samson Ruty Benjamini

Linda's art is bold, using colour and form in quiet interiors. Ruty makes delicate sculptural ceramics with contrasting surfaces.

www.lindasamsonart.com  
07800 850 578

4-5 Oct 11-12 Oct



15 78 Sisters Avenue  
SW11 5SN

### Anna Proctor

A collection of abstract impasto paintings, drawings and etchings spanning 15 years.

www.annaproctor.art  
@annacarolineproctor  
07956 756 697

4-5 Oct 11-12 Oct



16 14 Taybridge Road  
SW11 5PS

### Alexandra Milton

Alexandra is a French artist producing collages of animals and birds. She has illustrated six children's books (Boxer Books) which will be for sale.

www.alexandramilton.com  
@alexandramiltonartist  
07725 106 800

4-5 Oct 11-12 Oct



Sat 4 - Sun 5 and  
Sat 11 - Sun 12 October  
11am - 6pm  
**BATTERSEA,  
WANDSWORTH and BALHAM**



1 6 Prince Albert Mews  
SW11 4LL

### Jayson Singh

Jayson will be displaying figurative paintings and exotic vistas plus a re-imagined Wandsworth Shield design, with relevance to his own heritage.

@jaysonsingh  
07766 105 164

4-5 Oct 11-12 Oct



2 Suzette Battersea, 20 Battersea  
Square, SW11 3RA

### Elaine Giles

Come and view Elaine's recent colourful abstract work with excellent coffee and fabulous savoury and sweet crepes, plus great staff! Open 9am–5pm.

@elainergiles  
07949 089 031

4-5 Oct 11-12 Oct



3 Wandsworth Quaker Meeting  
House, 59 Wandsworth High  
Street, SW18 2PT

### Amanda Wunderlich Emma Charleston Val Coumont Linda Murgatroyd and other artists

Wandsworth Quaker Meeting House hosts this collaborative exhibition featuring Quaker artists from across Wandsworth exploring their faith through art. Opening times 11–6 Saturdays; 2–6 Sundays. See website for special events.

wandsworth.quakermeeting.org  
wandsworthquakers@gmail.com

4-5 Oct 11-12 Oct



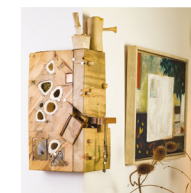
4 38 Acris Street  
SW18 2QP

### Phillippa Egerton Roopa Basu Catherine Marche

Abstract, figurative paintings and prints by Phillippa and Roopa; plus strikingly elegant jewellery by Catherine. And Phillippa's iconic Cakehead sculpture.

@phillippaegerton  
@catherinemarche  
@namoholondon  
07736 524 609

4-5 Oct 11-12 Oct



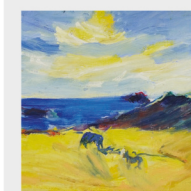
5 11 Burntwood Grange Road  
SW18 3JY

### Lindsey Whitelaw Harry Christophides

Showing Lindsey's colour filled paintings inspired by spaces, places and possibilities, and Harry's sculptures from cast offs, offcuts and the overlooked.

@lindseywhitelaw\_art  
07852 965 648

4-5 Oct 11-12 Oct



6 13 Burntwood Grange Road  
SW18 3JY

### Maureen Sweeney Fiona Reid Izzy Sidwel

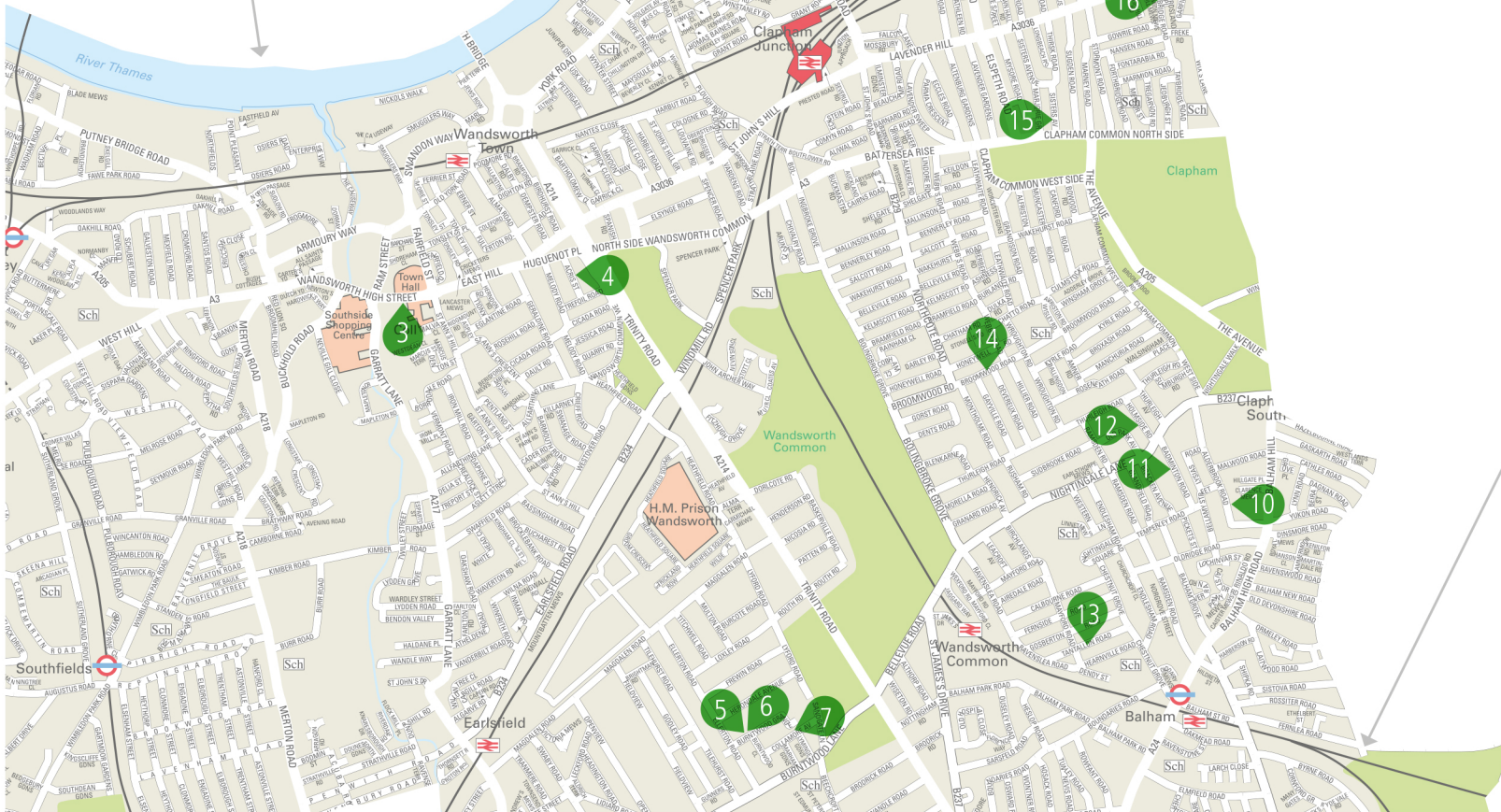
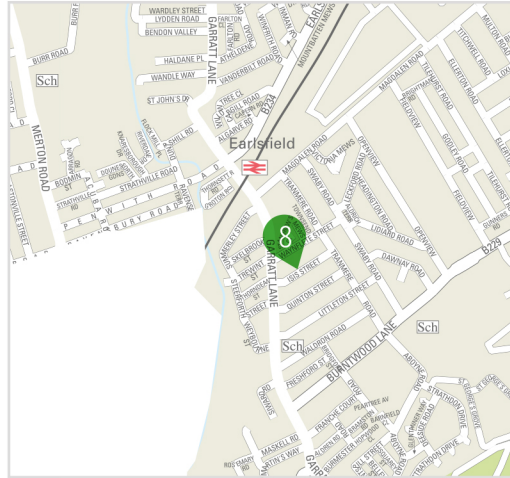
Maureen Sweeney is a painter and printmaker whose artwork shows her love of London and her travels. Fiona Reid's ceramics are a culmination of many disciplines, including dress making, architecture and engineering. Izzy Sidwel's ceramic work uses surface decoration of leaves and plants found on her walks across Wandsworth common.

020 8874 4202

4-5 Oct 11-12 Oct



# Battersea, Wandsworth and Balham



7 18 Collamore Avenue  
SW18 3JT

## Emma Thistleton Jane Clatworthy

Emma's watercolour illustrations of Tooting Bec Lido portray her love of swimming and hold many shared stories. Jane studied at the Heatherley School of Fine Art and was a finalist on 'Sky Portrait Artist of The Year'. Her floral still lifes are breathtaking.  
@emmathistletonart @janec\_art  
07949 833 810

4-5 Oct 11-12 Oct



8 13 Isis Street  
SW18 3QL

## Matthew Cordwell

Matthew creates impressionistic landscape paintings in oil inspired by the natural landscape and changing light.  
www.matthewcordwell.com  
info@matthewcordwell.com  
matthewcordwellart  
07773 746 901

11-12 Oct



9 34 Culverden Road  
SW12 9LP

## Tove Bellingham

Tove's stoneware ceramics celebrate forms and patterns found in nature. Her pieces are wheel thrown, altered and carved – each unique.

@toveofswedenceramics  
07840 544 105

4-5 Oct 11-12 Oct

