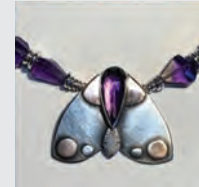


5 The Cottage, Cambalt Road, SW15 6EW

Sally Scott
Christine Savage
Gilbert Whyman

Paintings, oils and pastels, and prints created in Sally's studio or plain air alongside Christine's stylised jewellery incorporating unusual cuts and colours of precious and semi-precious stones. Plus Gilbert's sculptures in clay, welded steel, terracotta and recycled materials.



www.sallyscottartist.co.uk
@sallyscott.guy
07768 454 127
christinesavagejeweellery@gmail.com
@christinesavagejewellery
07966 550 936
gilbertwhyman@hotmail.co.uk
07726.529 504

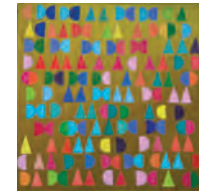
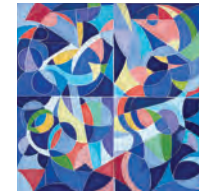
7-8 Oct 14-15 Oct



6 23 Balmuir Gardens SW15 6NG

Aurelia Bennett
Bettina Paterson

A fascinating collection of paintings translating the music of Franz Liszt's 12 transcendental etudes into visual forms. Tuscan landscapes and artwork including tempera, gouache, metallics and oils.



www.martian.studio
@aureliabennettartist
07813 353 196
@bettinapatersonartist
07791 596 106

7-8 Oct 14-15 Oct



7 9 Clarendon Drive
SW15 1AW

Jane Theophilus

Beautiful dishwasher proof colourful textured bowls, cups, mugs and jugs made on the wheel.

Note: steep steps to front door.

Janetheophilus@hotmail.com
07703 308 427

7-8 Oct 14-15 Oct



8 19B Clarendon Drive
SW15 1AW

**Charles Penny
Tamar Seaborn**

Studio sale of Charles' watercolours, oil paintings and greetings cards showing landscapes and still-lives inspired by travel and subjects closer to home. Tamar is showing thrown acorn jars, mini moon jars, beakers and bowls in green and blues, hand built dishes inspired by family relics and time spent in the Mediterranean and further afield.



charlespenny.uk
@charles.penny
07932 137 496
@tamarseaborn.pots
07801 574 908

7-8 Oct 14-15 Oct



9 25 Charlwood Road
SW15 1QA

Matt Shaw

A garden exhibition of sculpture. New and old studio-created works in various media including stone, metal, recycled and found materials.

www.matthewshaw.info
@MattShawArt
07746694390

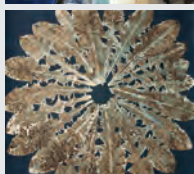
7-8 Oct 14-15 Oct



10 56 Lacy Road
SW15 1NL

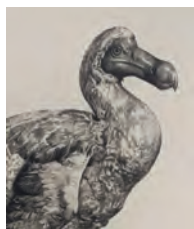
**Margaret Knott
Charlotte Annand
Carol Greenaway**

Colourful and intense still-life, landscapes and etchings alongside photographs inspired by the natural flora of Putney, capturing their ephemeral beauty by using historical and alternative processes. Carol will be showing domestic ceramics, made from stoneware and porcelain clays.



@margaret_g_knott
07752 323 493
@charlotte.annand
07968 250 154
@carolgreenawayceramics
07884 260 302

7-8 Oct 14-15 Oct



11 187 Lower Richmond Road
SW15 1HH

Tammy Mackay

Drawings and original prints of animals and birds cover the walls of the studio. Plus colour monoprints of Putney and London scenery.

www.tammymackay.com
@tammymackayart
07764831300

7-8 Oct



1 64 Schubert Road
SW15 2QS

Sim Hock Neoh

A large collection of oil and watercolour paintings of Putney, Central London and local scenes.

simhock.co.uk
020 8874 5158

7-8 Oct



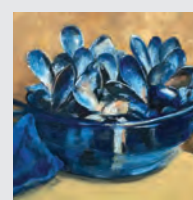
2 Flat 2, 13 Oakhill Road
SW15 2QJ

Gordon Glyn-Jones

Gordon's work (in oil, pencil and ink) points to a fascinating living universe beyond our own. Referencing surrealism, folkloric and fairytale traditions, looking to the ultra-future.

www.gordonglyn-jones.com
@gordonglynjones
07834 768 323

14-15 Oct



3 5, Rocklands Road
SW15 2LN

**Janet Mays
Maggie Laing**

A range of etchings, paintings and lithographs inspired by the natural world. Maggie makes original silver jewellery using semi-precious stones and found ceramics.



wednesday-isolationists.co.uk
@janjanmays
07752 513 788
@maggielaingjeweller
07969 850 520

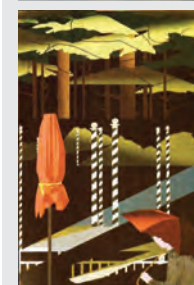
7-8 Oct 14-15 Oct



4 Putney Arts Theatre
Ravenna Road, SW15 6AW

**Bruce St Julian-Bown
Eileen St Julian-Bown**

Eileen's screen prints and Bruce's photography interpret landscape in very different yet emotive ways which also applies to the capturing of diverse scenes that caught their eye and imagination, locally and on the other side of the world.



putneyartists.org
bsjb@bsjb.co.uk
07791 110 773
07941 057 132

7-8 Oct 14-15 Oct

KEY

7-8 Oct 14-15 Oct Dates open



Wheelchair accessible



Stairs – please call the artists for further information. Most venues will have front doorsteps as they are home studios.

Visit www.artistsopenhouse.co.uk for interactive maps of Southfields, Battersea, Wandsworth, Tooting, Furzedown and Putney. Also further information on the artists.