



9 49 Penwortham Road  
SW16 6RF

### Peter Solari

My art is inspired by walking in a variety of environments documenting what I observe, whether gritty realism, romantic realism or the abstract.

@petersolari  
07917 467 119

4-5 Oct 11-12 Oct



10 138 Seely Road  
SW17 9QY

### Amanda Blunden

Amanda's semi-abstract contemporary paintings aim to create a mood of silent drama, evoking feelings of calm and pathos yet also joy and beauty.

@amandablundenart  
07846 901 080

4-5 Oct 11-12 Oct



11 47 Eswyn Road  
SW17 8TR

### Rob Schofield Ailie Donaldson

Rob paints vibrant pictures of fruit and vegetables in oils and charcoal. Ailie's paintings and drawings span a wide range of subjects and styles.

@rob.scoff  
07941 654 190

4-5 Oct 11-12 Oct



12 13 Letchworth Street  
SW17 8SX

### Ken McCalla

Ken uses bold and colourful imagery to express and celebrate his rich cultural heritage. His artwork explores personal growth and the search for harmony.

@yahw\_arts 020 8672 9492

4-5 Oct 11-12 Oct



13 84 Elmbourne Road  
SW17 8JH

### Consuelo Celluzzi

Paintings and crafts inspired by the natural world, flowers, modern culture and fairy tales.

@consueloartist  
07790 968 257

4-5 Oct 11-12 Oct



14 16A Stapleton Road  
SW17 8AU

### Joyce Akraasi

Hair and clothing accessories created in a zero waste way with distinctive textiles from deadstock and exclusive prints mixed with vintage finds, copper, brass, silver, bronze and glass.

www.akrasiboutique.com  
@akrasiboutique 07961 035 284

4-5 Oct 11-12 Oct



15 Flat 4, 37 Dafforne Road  
SW17 8TY

### Charly Earnshaw

Charly creates playful story-led illustrations that celebrate favoured memories and everyday moments.

@outlined.by.earnshaw  
07801 800 192

4-5 Oct 11-12 Oct



16 MAGAN, 16 Trinity Road  
SW17 7RE

### Andrzej Pacak

Just a minute from Tooting Bec station, MAGAN Gallery offers unique, wearable and collectable art you won't find anywhere else – and at fair prices.

www.magangallery.com  
@magan\_gallery\_london  
07934 220 685

4-5 Oct 11-12 Oct



17 35 Fishponds Road  
SW17 7LH

### Valerie Taylor Sandrine Vivès-Rotger Jess Davies Zahra Karami Ann Funston

Valerie is a painter, Jess is a printmaker, Zahra works in jewellery and paints, Ann is a painter who also works in glass and Sandrine is a photographer.

www.vt-artworks.co.uk  
07720 570 117

4-5 Oct 11-12 Oct



Sat 4 - Sun 5 and  
Sat 11 - Sun 12 October  
11am - 6pm

## TOOTING and FURZEDOWN



1 85 Thrale Road  
SW16 1NU

### Jill Coleman

Wheel thrown, functional and decorative ceramics which are enjoyable to live with.

@jillcolemanatthrale  
07764 635 248

4-5 Oct 11-12 Oct



2 17 Brookview Road  
SW16 6UA

### Margo Random Jane Richards

Margo's paintings and prints show an abstract sensibility and love of colour. Jane's ceramics are made on the wheel with texture and colourful glazes.

@margo\_random\_art  
07736 068 594

4-5 Oct 11-12 Oct



3 The Furzedown Project  
93 Moyser Road, SW16 6SJ

### Maria Storey Ronnie Hackston Neil Johnson

Three local artists showing paintings, ink drawings, lino prints, etchings and cards, inspired by nature, landscape and wildlife.

@mariastoreyprints

11-12 Oct



4 Flat 4, 113 Moyser Road  
SW16 6SJ

### Glyn Roberts Lucille Acevedo-Jones

Portrait photography, prints and textile art. Fundraising activities for Mind UK include charity portraiture and creative mending sessions.

@gtroberts\_photography  
07900 433 309  
www.lucilleacevedojones.co.uk

4-5 Oct 11-12 Oct



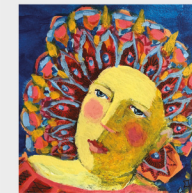
5 112 Nimrod Road  
SW16 6TQ

### Furzedown Art Studio Milly & Max Jewellery

Photography, paintings, illustrations, stationery, gifts and cards by Lynn & Iain Selwyn-Reeves (Furzedown Art Studio) and jewellery by Milly & Max.

@furzedownartstudio\_photography  
@MillyandMax1

4-5 Oct 11-12 Oct



6 14 Spalding Road  
SW17 9BW

### Lucinda Denning

Lucinda Denning is a painter who also makes prints, mosaics and drawings. And mugs, jigsaws, calendars, cards, coasters, mousemats and magnets.

www.lucinda-denning.com  
@lucindadenningpaintings  
07769 560 627

4-5 Oct 11-12 Oct



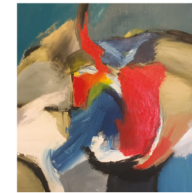
7 74 Moyser Road  
SW16 6SQ

### Sprout Community Arts

Our artist members' exhibition includes a selection of work from our super talented local artists. Open every day from Tuesday 30 Sept to Sunday 12 Oct, 11am to 5pm and weekends 11am to 6pm.

www.sproutarts.com  
@sprout\_arts\_london

4-5 Oct 11-12 Oct



8 84 Ribblesdale Road  
SW16 6SE

### Christopher Lessware

Chris Lessware is mostly an abstract painter who creates large canvases, usually in oils. His paintings are informed by life drawing and landscape and are highly textured, colourful and dynamic.

@Chrislessware  
07592 300 306

4-5 Oct 11-12 Oct



# Tooting and Furzedown





**18** 34 Culverden Road  
SW12 9LP

**Tove Bellingham**

Tove's stoneware ceramics celebrate forms and patterns found in nature. Her pieces are wheel thrown, altered and carved – each unique.

@toveofswedenceramics  
07840 544 105

4-5 Oct 11-12 Oct

## KEY

4-5 Oct 11-12 Oct Dates open



Wheelchair accessible



Stairs – please call the artists for further information. Most venues will have front doorsteps as they are home studios.

Visit [www.artistsopenhouse.co.uk](http://www.artistsopenhouse.co.uk) for interactive maps of Putney, Southfields, Battersea, Wandsworth, Balham, Tooting and Furzedown, and Delta House and Wimbledon Art Studios. Also further information on the artists.