

Battersea, Wandsworth, Tooting & Furzedown



7 Studio 136, Wimbledon Art Studios, SW17 0BB

Alma Tipon

Aerial seascape paintings inspired by the serene colours and captivating textures skilfully capturing the essence of the sea.

www.almatipon.co.uk
@almatiponart
07447 937 007

7-8 Oct 14-15 Oct



8 Studio 37, Wimbledon Art Studios, SW17 0BB

Annam Butt Apсен Aren Mark Chen Cristina Vercesi Shirley Chi Domino Roe

Wimbledon Studios is home to these six talented fine artists. Classically trained, their work ranges from portraiture, figure, printmaking, clay figures and sculpture.

@manquin 07512 295 114
@aspnaren 07376 212 399
@markchenart 07398 204 862
@cristina_vercesi 07986 777 105
@shirleychiart 07503 721 500
@dominoroeart +353838513610

7-8 Oct 14-15 Oct



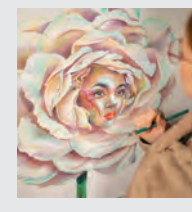
9 35 Fishponds Road SW17 7LH

Valerie Taylor Ann Funston Sue Owen Steve Owen Geraldine Kelly

Valerie will be showing stunning oil, watercolour and charcoal landscapes. Ann blends abstract and representational motifs in paintings and glass. Sue creates abstract textile art combining print and stitch work and cards to send or frame. Steve makes semi-abstract limited edition screen and lino prints. Geraldine is a weaver, spinner and basketmaker.

@vtaylor_art 07720 570 117
Ann: 07542 742 269
@suestextiles 07762 024 309
@steveowen90 07456 002 633
Geraldine: 07737 200 110

7-8 Oct 14-15 Oct



10 Flat 6, 84 Elmbourne Road SW17 8JH

Consuelo Celluzzi

A magical and whimsical range of arts, crafts and cards inspired by nature.

consuelo4art@hotmail.co.uk
@consueloartist
07790 968 257

7-8 Oct 14-15 Oct



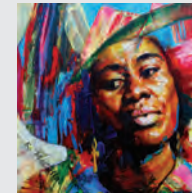
11 16a Stapleton Rd SW17 8AU

Joyce Akراسي

Inspired by 50s and 60s African fashion nostalgia this zero waste design boutique produces unique hair and clothing accessories that are quirky, classic and stylish.

www.akrasiboutique.com
@akrasiboutique 07961 035 284

7-8 Oct



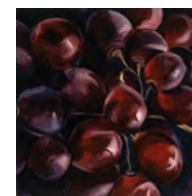
12 13 Letchworth Street SW17 8SX

Ken McCalla

Using bold and colourful imagery to express his rich cultural heritage, Ken's artwork explores personal growth and celebrates harmony.

www.yahwarts.co.uk
@yahw_arts
020 8672 9492

7-8 Oct 14-15 Oct



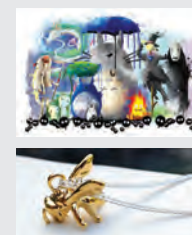
13 47 Eswyn Road SW17 8TR

Rob Schofield

Bold, rich oil paintings and striking charcoal drawings celebrate the beauty of fruit and vegetables.

robsoff@gmail.com
07941 654 190

7-8 Oct 14-15 Oct



14 24 Sellincourt Road SW17 9RY

Urban Faerie Killer Bunny

Hand-made jewellery for the curious plus fun and quirky illustrations.

urban-faerie-oddities.com
@urbanfaerieoddities
@killerbunny8888

7-8 Oct 14-15 Oct



15 138 Seely Road
SW17 9QY

Amanda Blunden

Large scale contemporary sea and landscapes inspired by a desire for open spaces and solitude.

www.amandablundenart.com
@amandablundenart
07846 901 080

7-8 Oct 14-15 Oct



16 14 Spalding Road
SW17 9BW

Lucinda Denning

Vibrant and colourful oil and gouache paintings, linocut and woodcut prints, mosaics, small painted furniture pieces and much more.

Lucinda-Denning.com
@lucindadenningpaintings
07769 560 627

7-8 Oct 14-15 Oct



17 112 Nimrod Road
SW16 6TQ

Iain Selwyn-Reeves Lynn Selwyn-Reeves Milly & Max Accessories

Paintings, photography, illustrations and house portraits, cards and gifts by Furzedown Art Studio. Beautiful contemporary styled costume jewellery combining new and vintage charms by Milly & Max.

www.furzedownartstudio.co.uk
@furzedownartstudio_photography
07946 255274
@MillyandMax1

7-8 Oct 14-15 Oct



18 Flat 4, 113 Moyser Road
SW16 6SJ

Glyn Roberts

A range of photography including art nudes, Wimbledon womens' football shots and a new 'surge' series of landscape photography.

www.gtrobertsphotography.com
@gtroberts_photography
07900 433 309

7-8 Oct 14-15 Oct



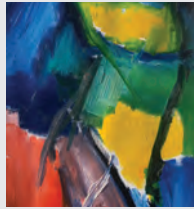
19 74 Moyser Road
SW16 6SQ

Sprout Arts

A fantastic range of artwork including paintings, photography, drawings, illustrations, ceramics, jewellery and crafts. Gallery open every day from 3 to 15 October.

www.sproutarts.com
@sprout_arts_london

7-8 Oct 14-15 Oct



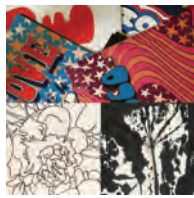
20 84 Ribblesdale Road
SW16 6SE

Chris Lessware

Dynamic abstract and figurative paintings with frequent passing resemblances to the human body and the landscape.

chrislessware.co.uk
@chrislessware
020 8769 0520

7-8 Oct 14-15 Oct



21 49 Parklands Road
SW16 6TB

Linda Scott/Karen Hall

Super-cool typography and hand-drawn illustrations from the Bubble Writer for children and adults. Karen will showcase prints featuring flowers and plant forms rooted in the living art of Ikebana.

www.bubblewriter.com
@lindascott 07903 255 948
@LoveLifePlant 07961 338 283

7-8 Oct 14-15 Oct

KEY

7-8 Oct 14-15 Oct Dates open



Wheelchair accessible

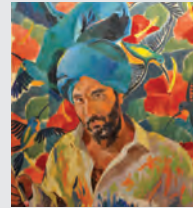


Stairs – please call the artists for further information. Most venues will have front doorsteps as they are home studios.

Visit www.artistsopenhouse.co.uk for interactive maps of Putney, Southfields, Battersea, Wandsworth, Tooting and Furzedown. Also further information on the artists.



Sat 7 - Sun 8 and
Sat 14 - Sun 15 October
11am - 6pm
**BATTERSEA, WANDSWORTH,
TOOTING & FURZEDOWN**



1 6 Prince Albert Mews
SW11 4LL

Jayson Singh

A broad range of figurative self portraits and landscape paintings inspired by visits to my father's birthplace in Malaysia.

jayson_singh@yahoo.co.uk
@jaysonsingh
07766 105 164

7-8 Oct



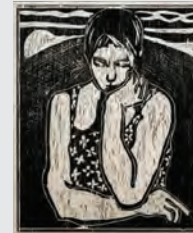
2 2 Kite Yard, Cambridge Road
SW11 4TA

Clare Frankl-Bertram

The clay pieces shown are a mix of sculptural and utilitarian works on the edge of functionality. The form of each piece comes from a process of space making and exposure.

wayland.clare@gmail.com
07980 578 233

7-8 Oct 14-15 Oct



3 5 Knowsley Road
SW11 5BN

Ander Gunn Sheila Oliner Anthony Bryant Nicola Bealing

Ander has been photographing actors and authors in London since the 50s. He moved to Cornwall in the 60s where he has captured people and the landscape. Sheila's original prints are concerned with a woman's lot and the world around us. Anthony explores the sculptural potential and the physical limits of woodturning. Nicola is a Cornwall-based painter and printmaker.

www.petrionillasilver.co.uk
@petrionillasilver
07740 436 242

7-8 Oct



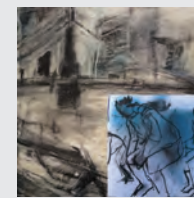
4 13 St. Anns Park Road
SW18 2RW

Amanda Burnyeat

Bespoke hand-made gifts and accessories: tapestry cushions, draught excluders, shoulder bags, key fobs and dog walking bags.

www.studioburnyeat.co.uk
@studioburnyeat
07956 547 251

14-15 Oct



5 12 Westover Road
SW18 2RG

Honor Brogan Bridget Boulting

Honor and Bridget's work focuses on landscape and the human figure using a variety of drawing media.

honorbrogan@hotmail.co.uk
boultings@me.com
020 8874 2828

7-8 Oct 14-15 Oct



6 13 Burntwood Grange Road
SW18 3JY

Maureen Sweeney Phillippa Egerton Fiona Reid

Maureen will be showing prints and paintings. Phillippa is a prize winning printmaker and painter whose recent work reflects on climate change. She will be showing one of her notorious cake heads. Fiona's ceramics will also be on show. She creates her pieces in an unusual way, making a jar like a dress pattern, cutting out the clay and folding it.

mosweeney2003@yahoo.co.uk
020 8874 4202
phillippaegerton.co.uk
@phillippaegerton
07736 524 609
020 7223 7999

7-8 Oct 14-15 Oct